

H410 Series

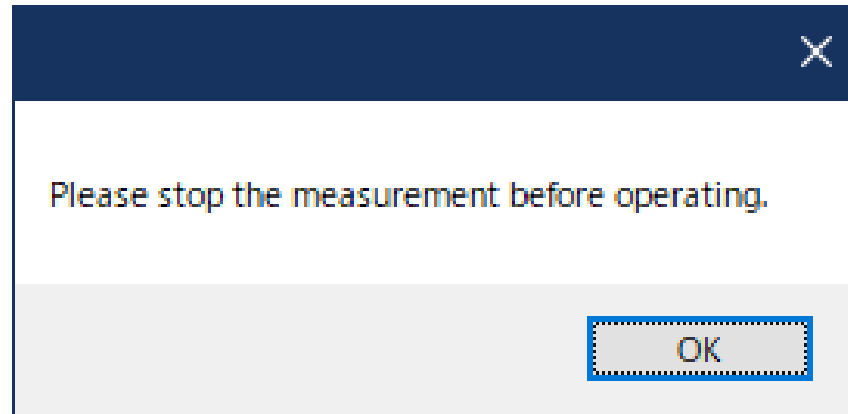
Setup Transfer Tool manual



Contents

1. Notes
2. Preparation - PC network settings (IP address)
3. Preparation - 410 Series System Settings (IP Address)
4. How to start Tool
5. Tool screen description
6. Tool operation instructions - Add Device
7. Tool operating instructions - delete device
8. Tool operating instructions - device connection
9. Tool operating instructions - reconnect device
10. Tool operating instructions - download configuration file
11. Tool operating instructions - upload configuration file
12. Tool operating instructions – Firmware/Embedded software Update

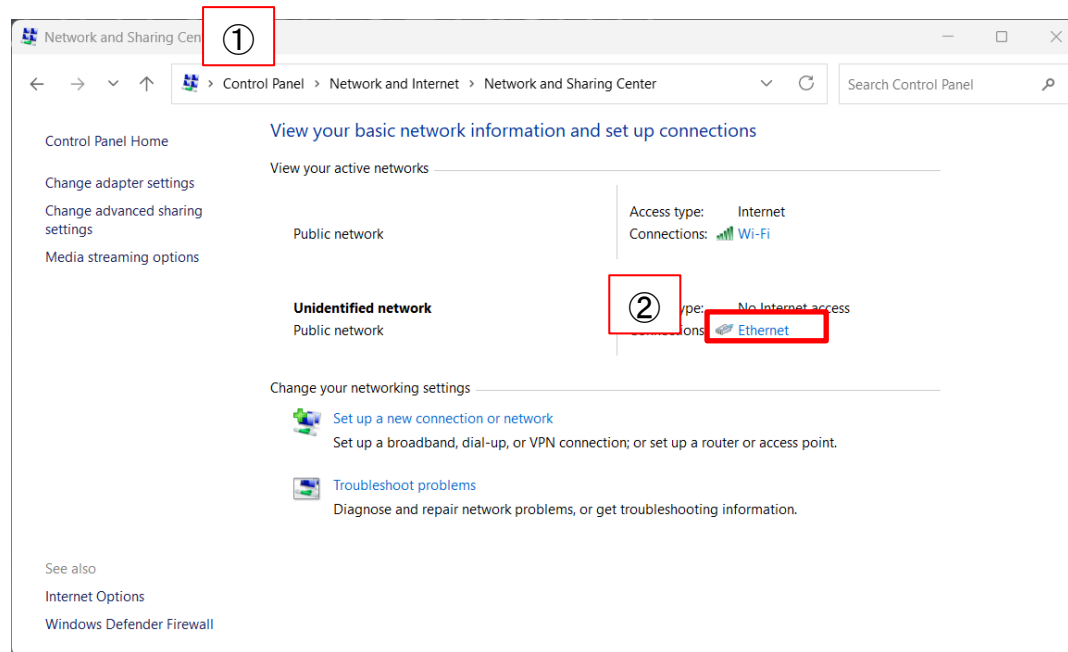
1. Notes



The setting tool not usable during H410 series measurement.
Please use after moving to the setting screen

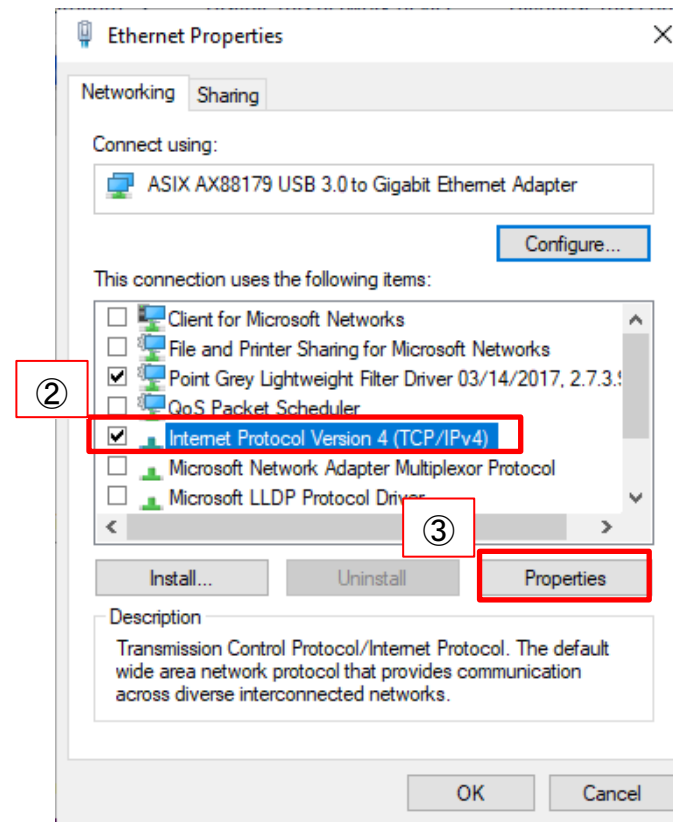
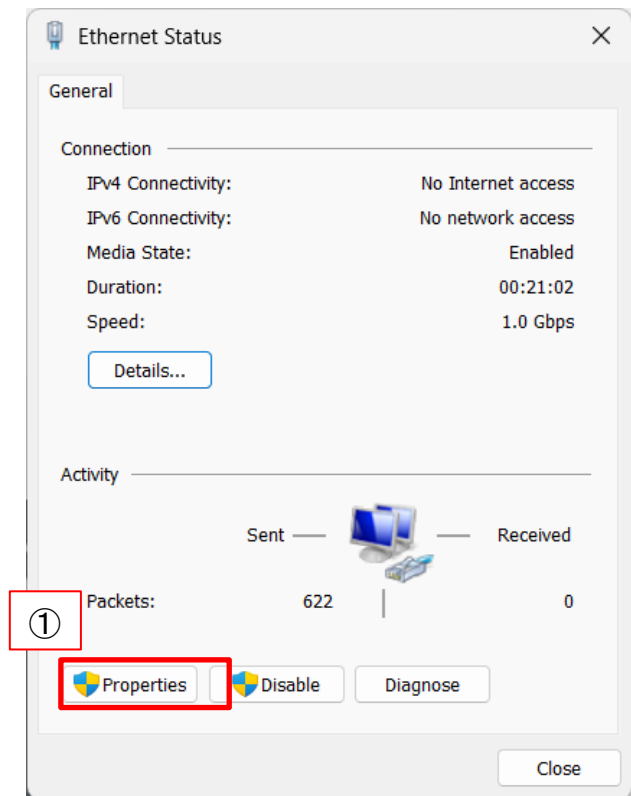
2. Preparation-PC network settings (IP address)

To establish the connection between the PC and the H410 series, set the network settings (IP address) on the PC side. (* Supported OS: Windows)



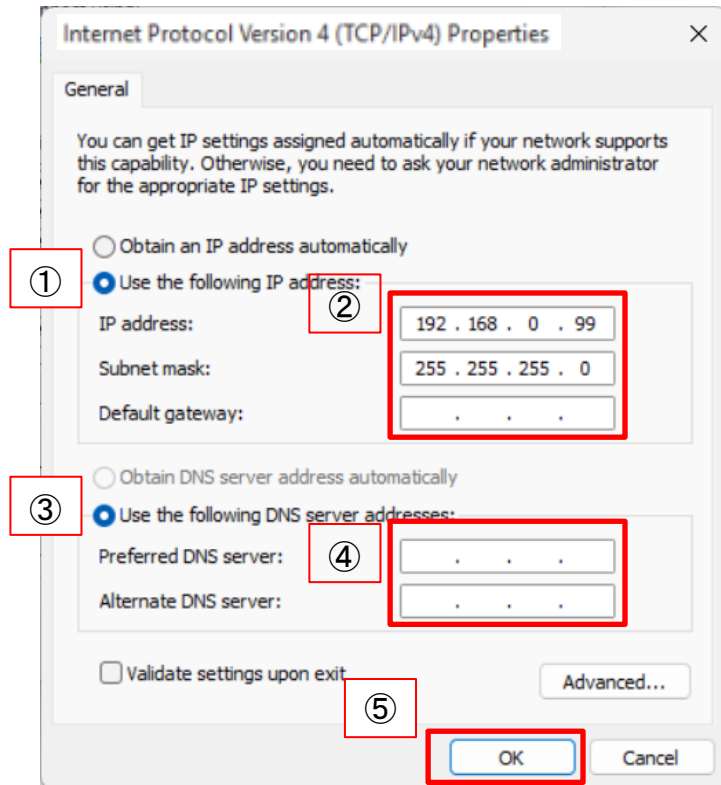
- ① When hardware connection is complete, go to Control Panel> Network and Internet> Network and Sharing Center
- ② Press "Ethernet"

2.Preparation-PC network settings (IP address)



- ① Click "Properties"
- ② Make sure that "Internet Protocol Version 4 (TCP / IPv4)" is checked and selected
- ③ Click "Properties(R)"

2.Preparation-PC network settings (IP address)



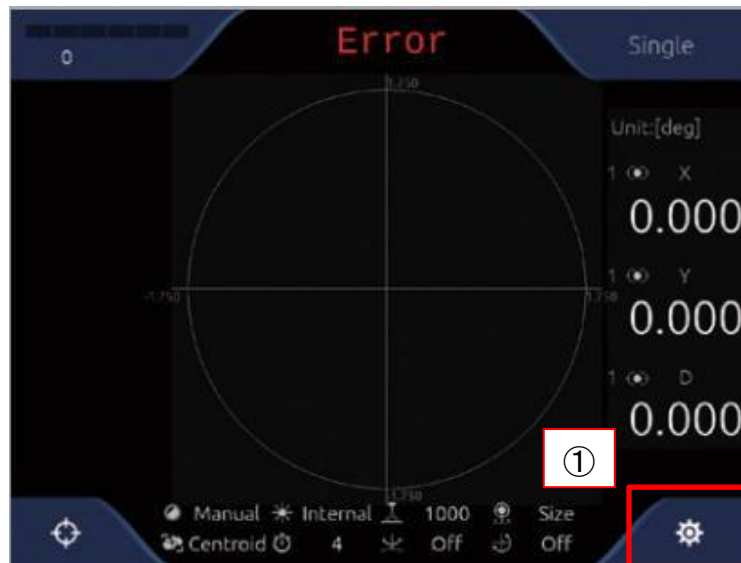
[Setting Example]

IP Address(I): 192.168.0.99
Subnet mask(U): 255.255.255.0
Default gateway (D): Blank

- ① Check "Use the following IP address (S)"
- ② Enter "IP address (I)", "Subnet mask (U)", and "Default gateway (D)" referring to above [Setting example]
- ③ Check "Use the following DNS server address (E)"
- ④ No need to enter "Priority DNS server (P)" and "Alternative DNS server (A)"
- ⑤ Click "OK" to complete the IP address setting

3. Preparation --H410 Series System Settings (IP Address)

In order to establish the connection between the PC and the H410 series, configure the Ethernet settings (IP address) on the H410 series side.

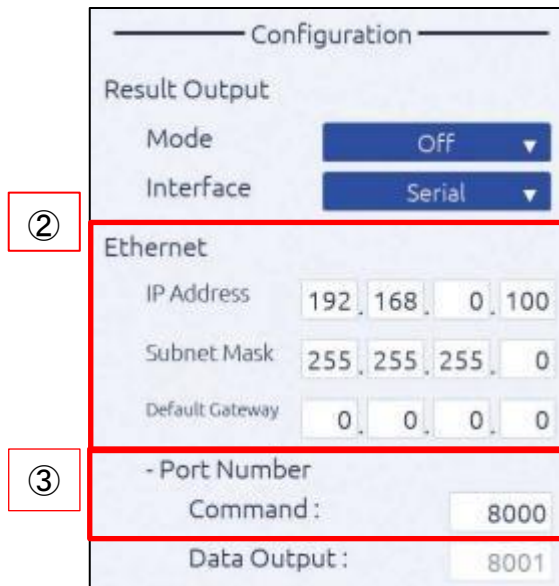


- ① After starting the H410 series, touch "Settings" on the measurement screen

3. Preparation --H410 Series System Settings (IP Address)



- ① Touch the tab "system settings"
- ② Enter the Ethernet "IP Address", "Subnet Mask", and "Default Gateway" by referring to the [Setting example] below
- ③ Enter 8000 in The -Port Number "Command"
- ④ Touch "Save" to complete the IP address setting



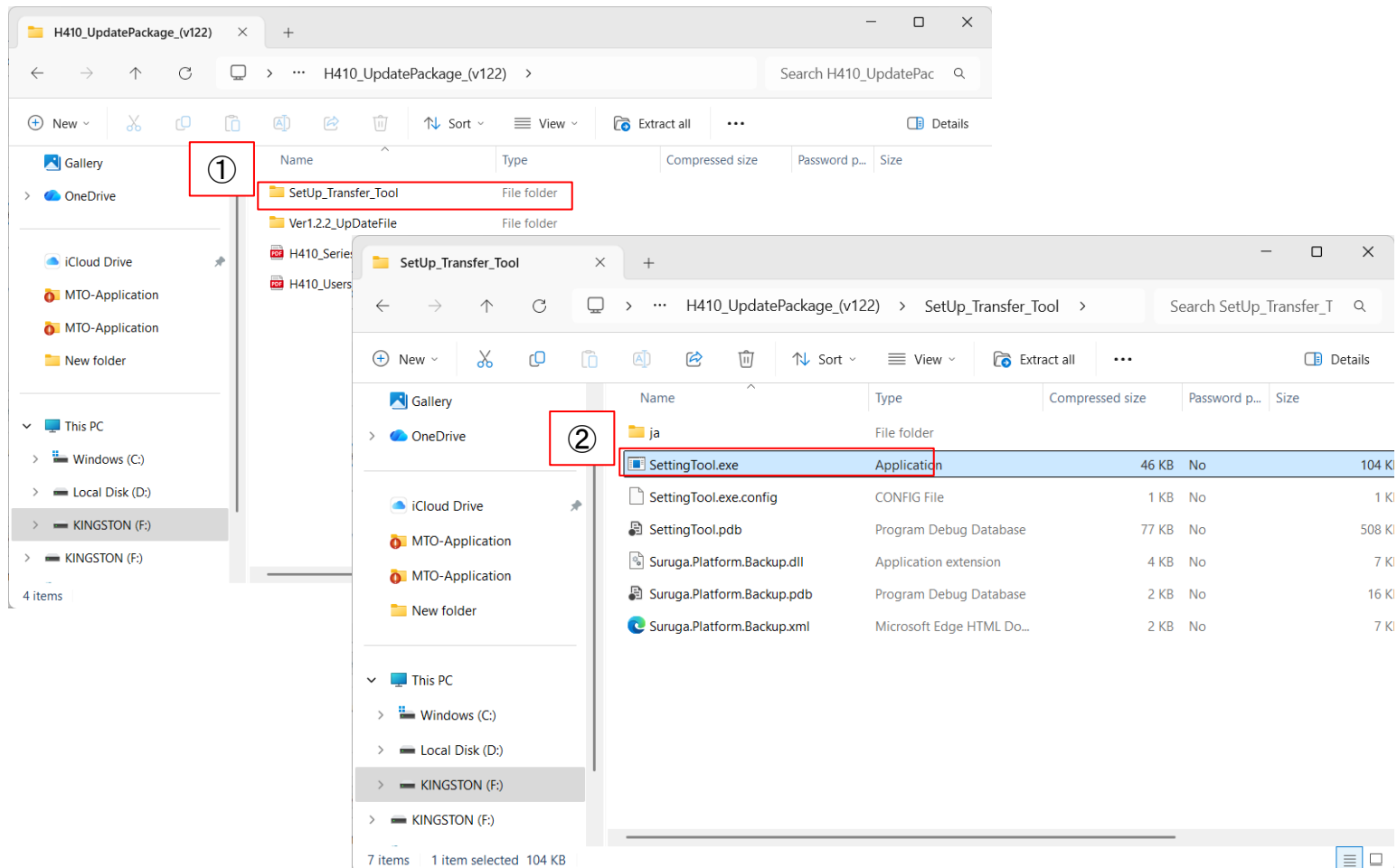
[Setting sample]

IP Address : 192.168.0.100
Subnet Mask : 255.255.255.0
Default Gateway : 0.0.0.0

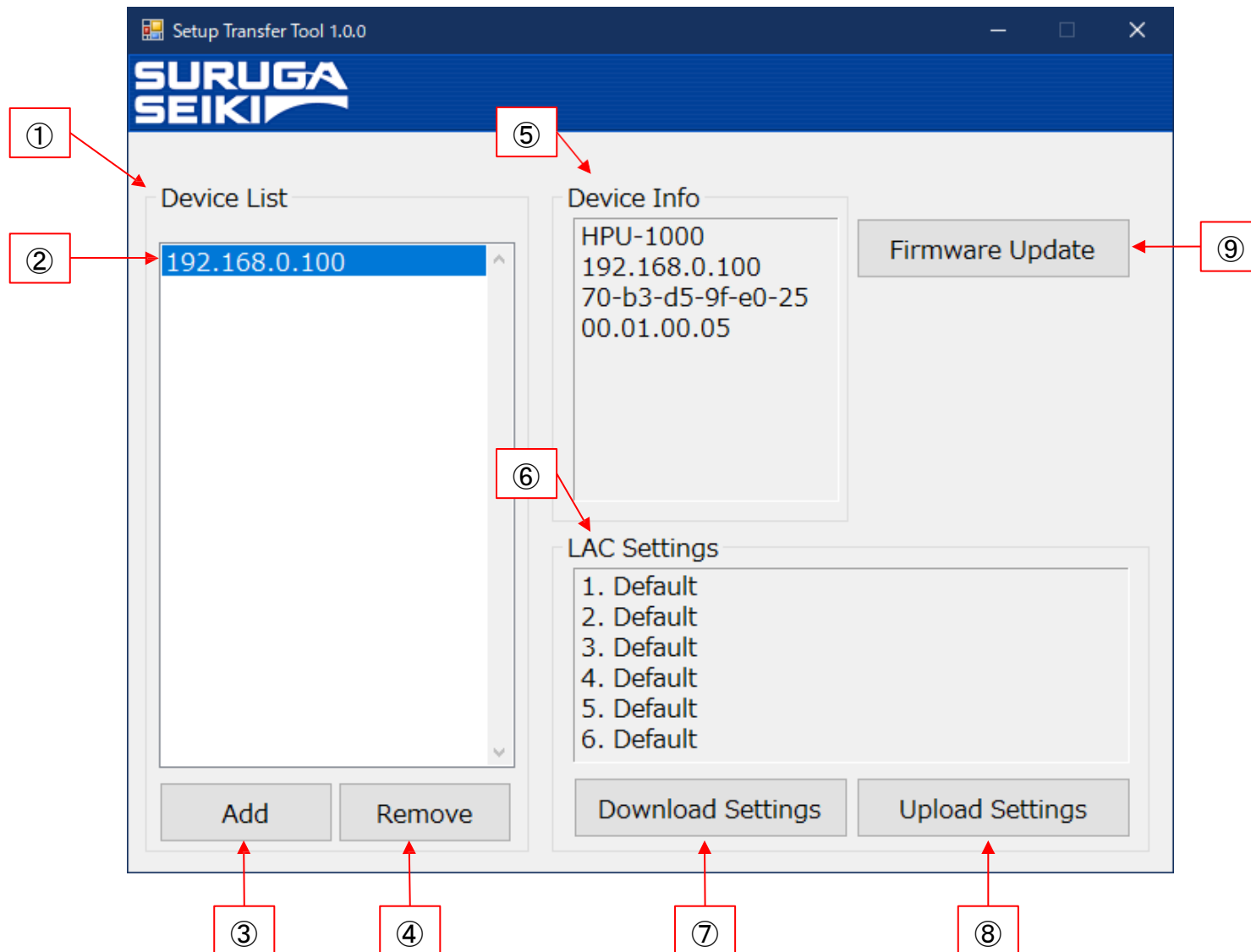
※If the value is not duplicated with the IP address on the PC side (example: 192.168.0.99) set in the previous section, it can be set in the range of 192.168.0.xxx (xxx = 1 to 254).

4. How to start Tool (this package only)

- ① OPEN 「H410_UpdatePackage_(vxxx)」 > 「SetUp_Transfer_Tool」
- ② Double Click on “SettingTool.exe” to execute the setup_tool



5. Tool screen description

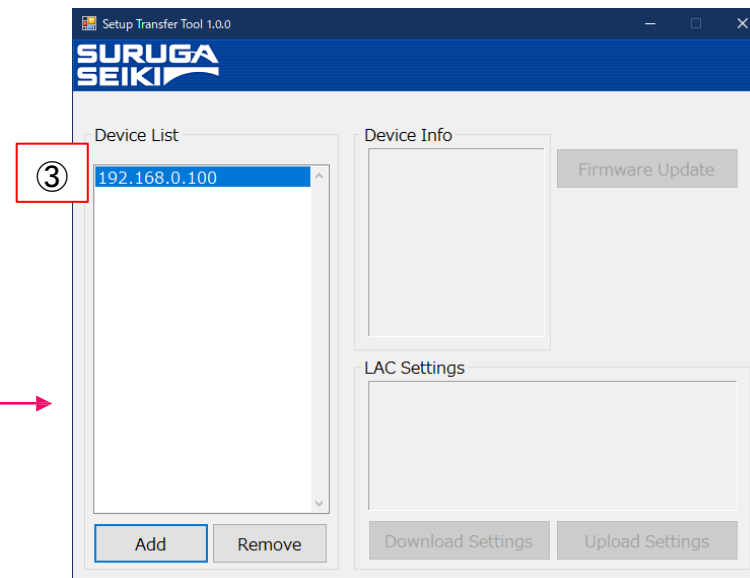
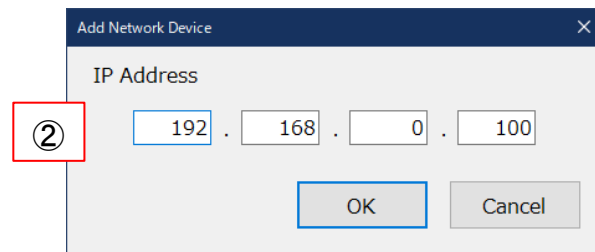
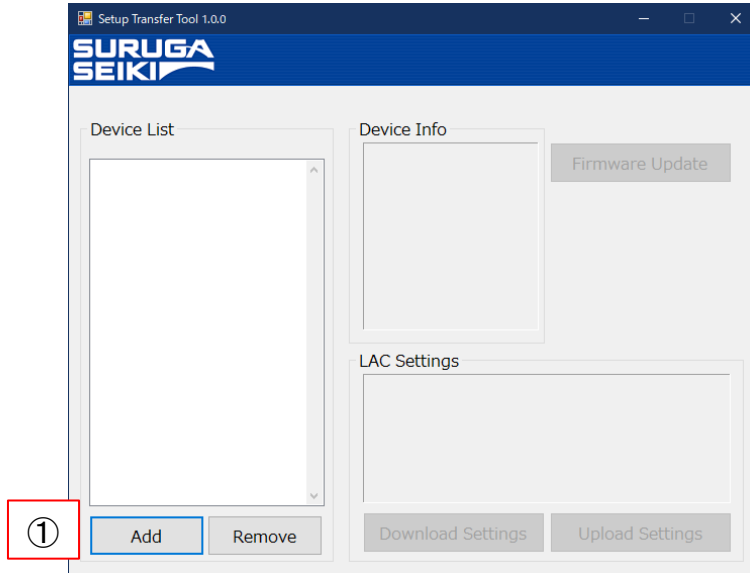


5. Tool screen description

- ① Device List : Lists each device by IP address.
- ② IP address : The IP address added in ③ is displayed
- ③ Add button : Add an IP address
- ④ Remove button : Delete the added IP address
- ⑤ Device Info : Displays the device information of the selected device
- ⑥ LAC Settings : Displays the "setting file" name on the H410 series
- ⑦ Download Settings button : Download the setting file on the H410 series
- ⑧ Upload Settings button : Upload the setting file on the H410 series
- ⑨ Firmware Update button : Update the H410 series IPU firmware

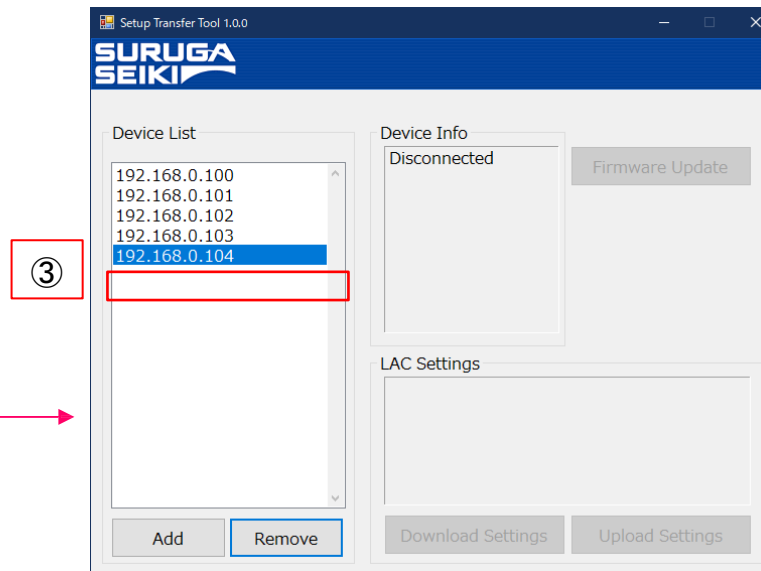
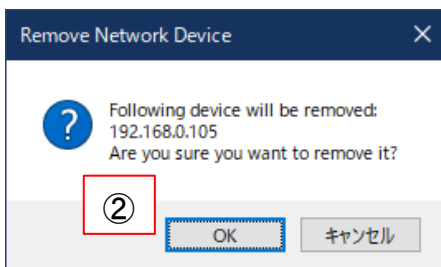
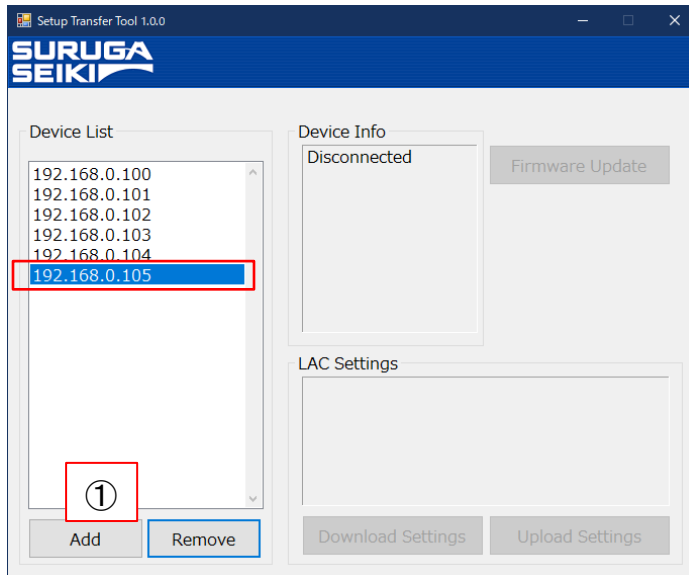
6. Tool Operation Instructions-Add Device

- ① Press "Add" button
- ② Enter the IP address set in the previous section "Preparation H410 Series System Settings (IP Address)" and click the "OK" button
- ③ The IP address added to the "Device List" is displayed



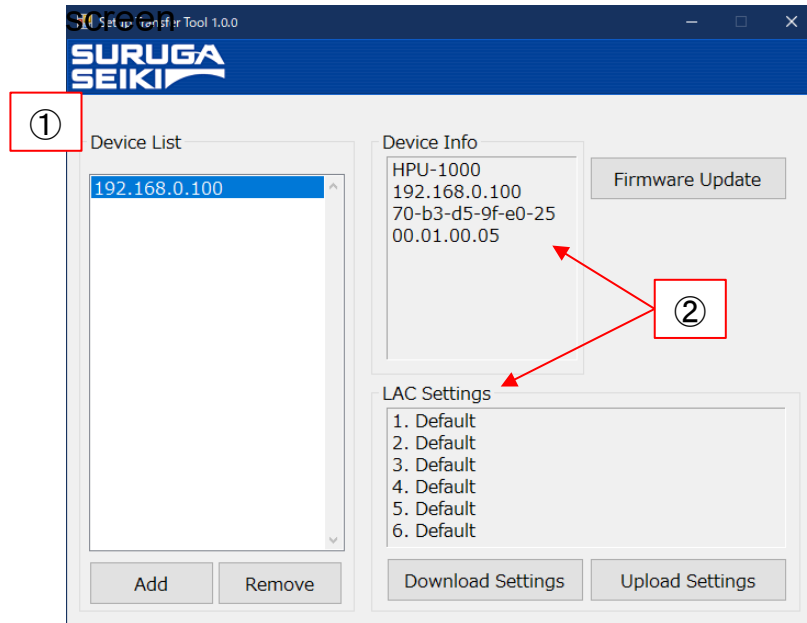
7. Tool operating instructions – delete device

- ① Choose “Device List” and push “Remove” button
- ② Press “OK” button
- ③ The IP address selected from the "Device List" will be deleted

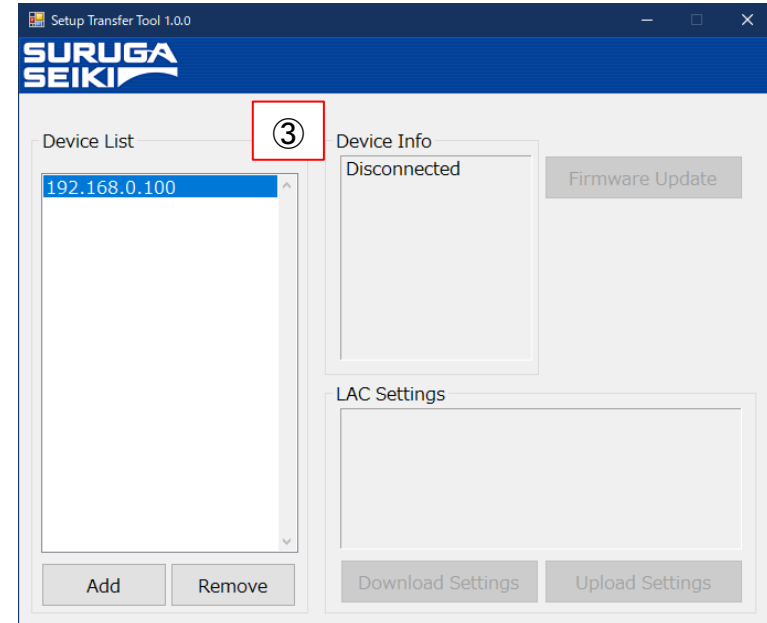


8. Tool operating instructions – device connection

Device connecting

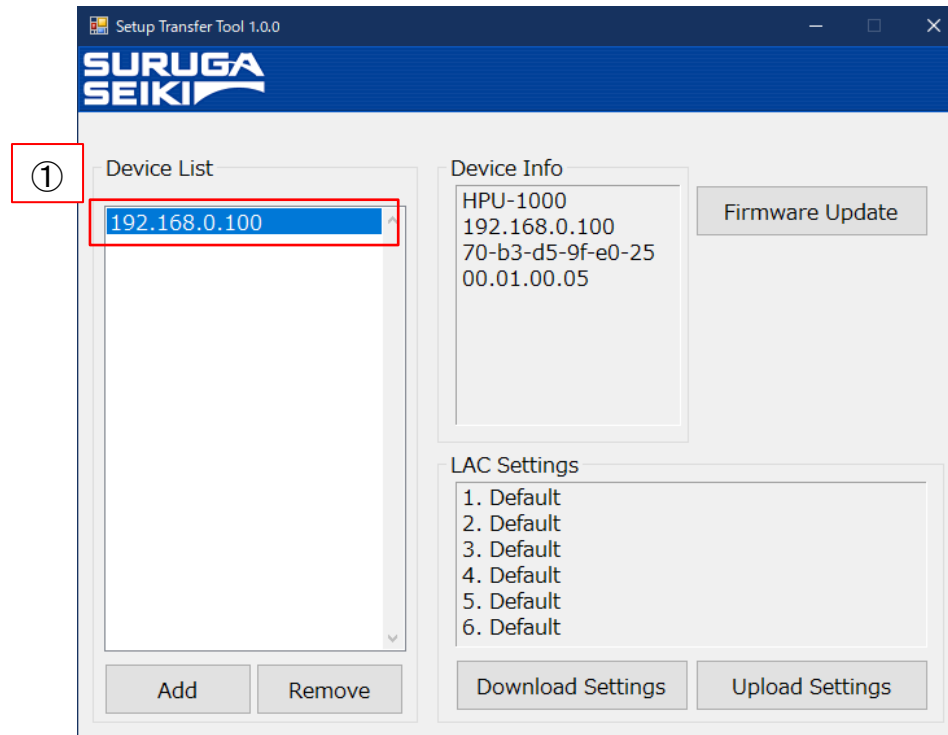


Device unconnected screen



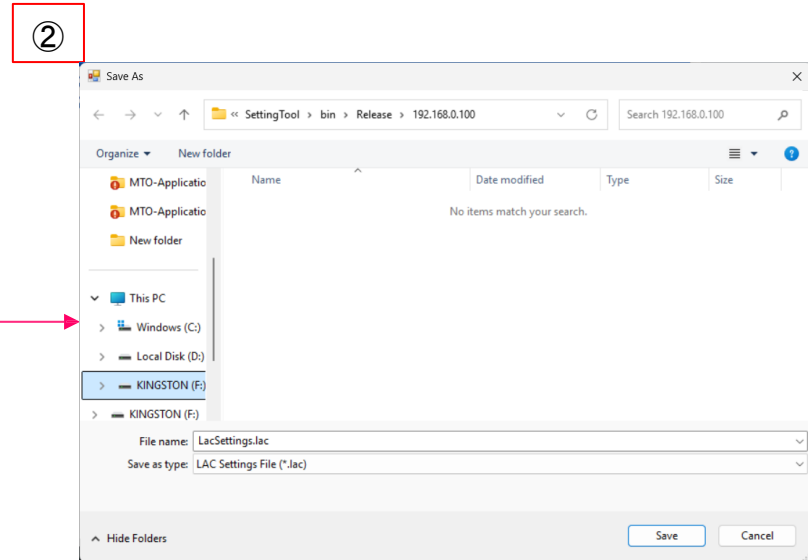
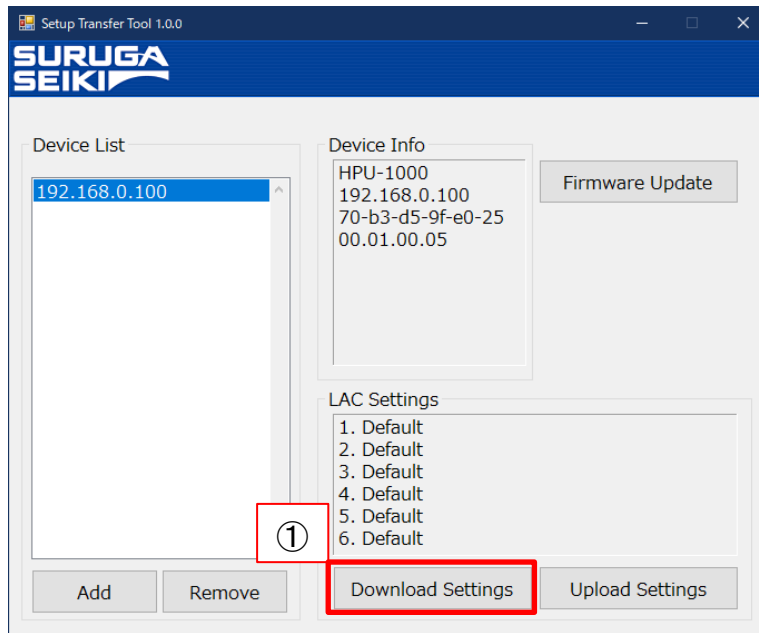
- ① To connect to the device and start communication, select the IP address in the "Device List"
- ② After connecting the device, if communication starts normally, the information will be updated in "Device Info" and "LAC Settings"
- ③ If the device is not connected, "Disconnected" is displayed in "Device Info"

9. Tool operating instructions – reconnect device



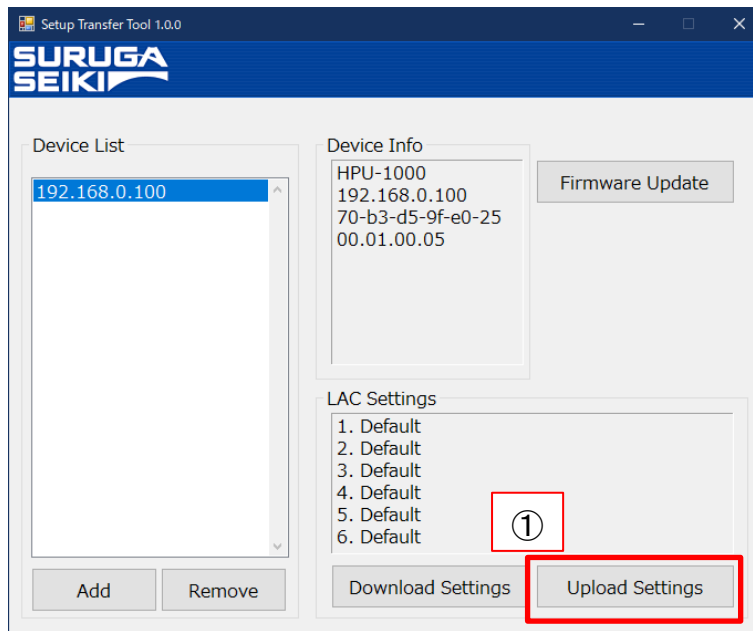
- ① If you want to reconnect the device or update the information in "Device Info" and "LAC Settings", select the IP address in "Device List" again

10. Tool operating instructions-download configuration file

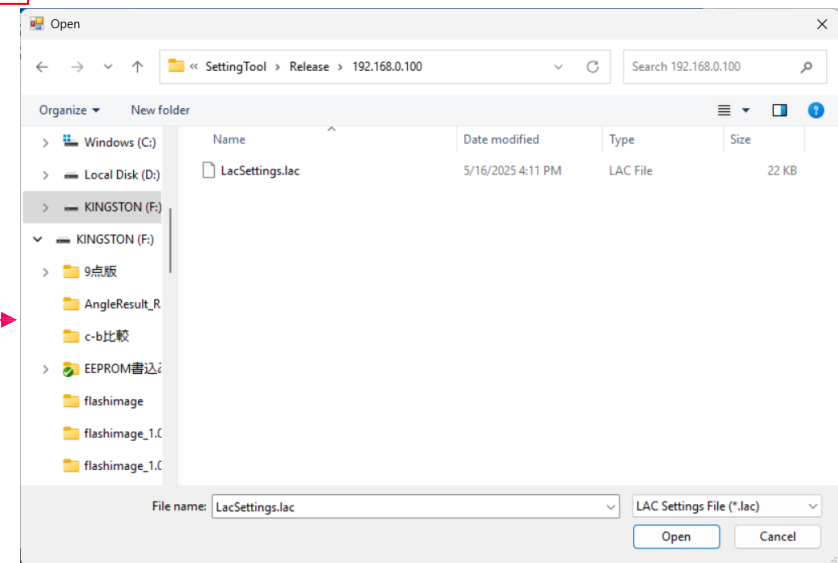


- ① To download the setting file set in the H410 series, click the "Download Settings" button.
 - ② Set the file name with any name and click the "Save (S)" button to save the file in the folder * with the .lac extension
- ※ A folder is automatically created with the name of the connected Device List

11. Tool operating instructions-upload configuration file

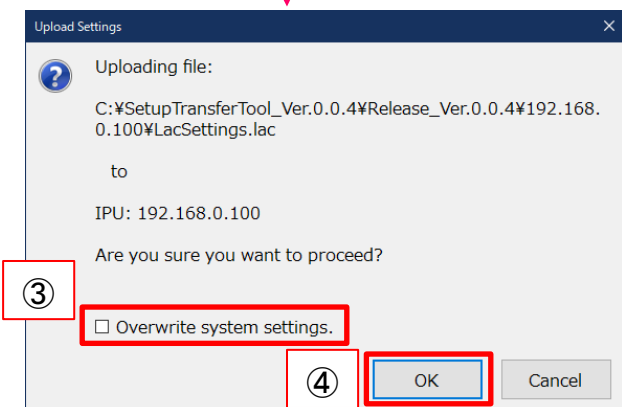


②

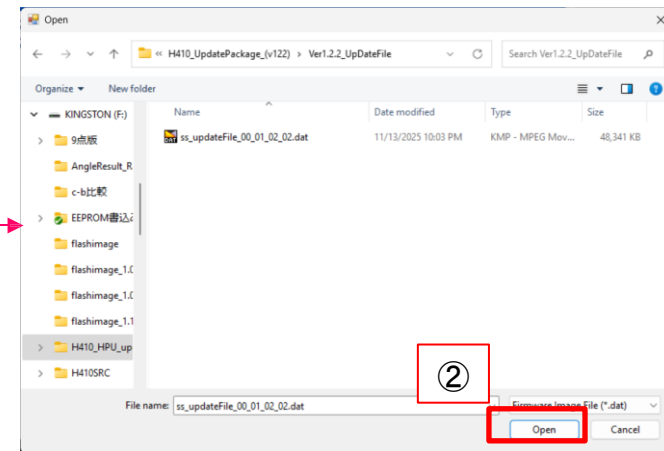
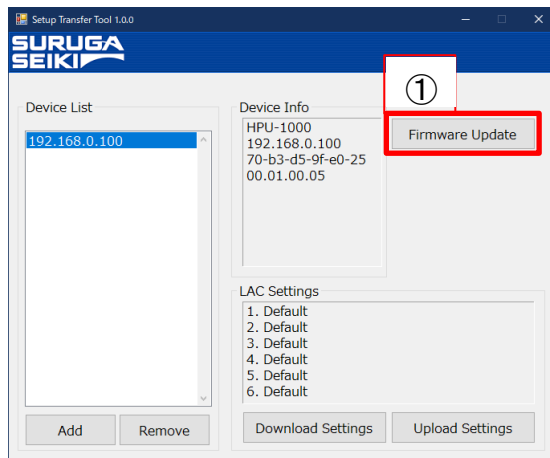


- ① To upload the setting file to the H410 series, click the "Upload Settings" button
- ② Select the .lac extension → click the "Open (O)" button
- ③ will be asked if you want to overwrite the system settings at the same time ✖, so check it if you want to overwrite it
- ④ By clicking the "OK" button, the setting file will be uploaded to the H410 series

✖Other than network related settings (IP address, netmask,gateway)



12. Tool Operating Instructions-Firmware Update



Attention: the firmware(embedded software)for verx.x.x update file is in "Ver.x.x.x_UpDateFile" in the "H410 HPU update package".

- ① To update the H410 series IPU firmware, click the "Firmware Update" button
- ② Select the .dat extension for firmware update prepared in advance → Click the "Open (O)" button
- ③ A confirmation screen will be displayed. Click the "OK" button to start the firmware update
- ④ When the restart request screen is displayed, click the "OK" button and then restart the H410 series to complete the firmware update

There is no need to replug the Ethernet cable

※Do not restart using the S998 command.

